



STORM EVENTS

TIM ROBERTS

SYSTEMS INFORMATION MANAGER



TRANSPower

09/08/2023

POWERING NEW ZEALAND TODAY + TOMORROW

LEARNING – LIVE INFORMATION IS HARD TO GET

We find it hard to know the live depth of the water at sites.

Happened at Redclyffe and more recently Gore



LEARNING – ACCESS TRACK DATA COLLECTION

The field teams needed a way to collect data on the state of our access tracks and display

HAWKES BAY Access Track Inspection

Bridges - Inspection Status

Search Tower/ACW/Wate

1 of 1

Bridge #13108279

Inspection

Physical Status

Red: impassable, significant damage (impassable slips, drop outs, destroyed culverts etc.)

Physical Description

Bridge destroyed

Information

Maximo Location

ACW-TP807193

Bridge #13108279

Copyright Technology Ltd. All Rights Reserved. Geoportal (C.C. BY). This work is licensed under a Creative Commons Attribution 4.0 International License (CC BY 4.0) <https://creativecommons.org/licenses/by/4.0/>

LEARNING – INFORMATION GAPS & RISKS EXPOSED

Some of our historical records on tower foundations are hard to find.

We lost drawing folders at our RedClyffe substation.

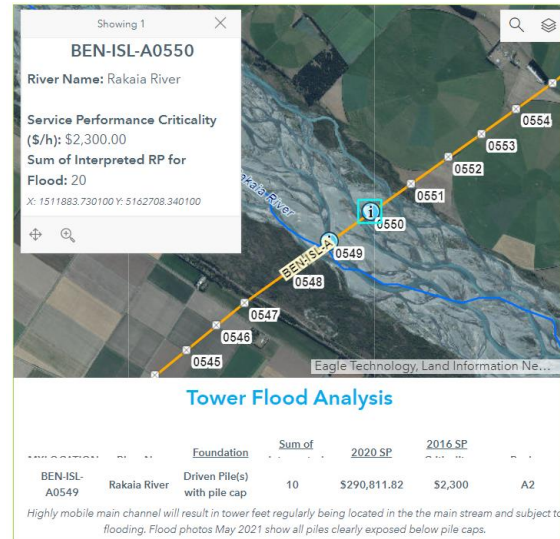


HIGHLIGHTS IMPORTANCE OF RISK ANALYSIS

KNOWING RISK AND IMPORTANCE OF ASSETS IS KEY

Can take action before and during the event

GIS is great for analysis and presentation





HOW THIS FORUM COULD HELP

WHAT LEARNINGS DID OTHER ORGANISATIONS HAVE?

Just sharing ideas and solutions goes a long way

COULD WE BE SHARING MORE INFORMATION?

Have other organisations done risk analysis?