



Toitū Te Whenua
Land Information
New Zealand

Resilience & Climate Change

Work programme overview

Rob Deakin
Manager Resilience

9th November 2021

Our outcomes and challenge area



High-value geographic and property information

Geographic and property information are used effectively to deliver value for New Zealand.



World-class property system

The property system is ready for the future, built for growth and changing needs.



Making best use of the Crown Estate

Getting the best public value from the Crown Estate, for the benefit of all New Zealanders.



Safeguard New Zealand's interest in sensitive assets

Ownership of sensitive assets reflects New Zealand's best interests.



Resilience and climate change

Support efforts to prepare for, mitigate and adapt to the impacts on land and sea of climate change and one-off events (natural and man-made).

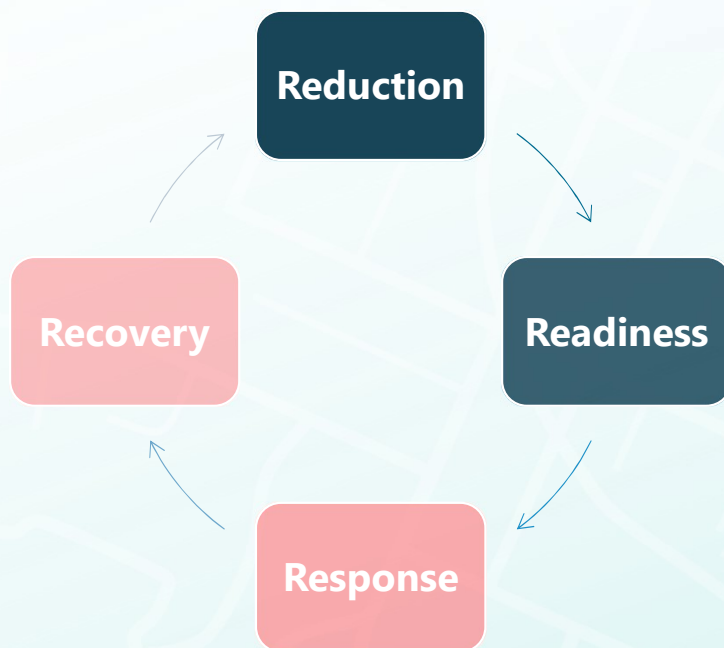
Our Resilience & Climate Change work programme

- Key Data Improvements
- Enabling improved data access & use
- Emergency event support
- Cross-government and cross-sector support

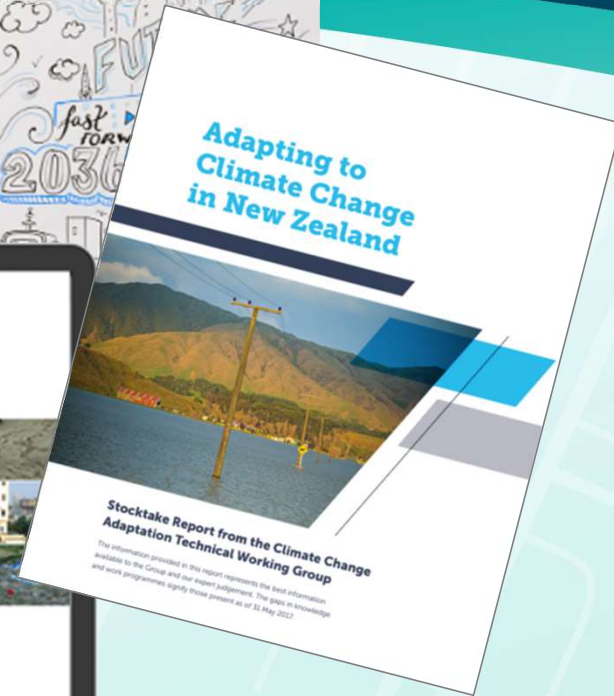


Key datasets

Define “Resilience & Climate Change”



What data is important?



Key datasets for resilience & climate change



Address
Buildings
Property
Population



Road Network
Rail Network



Elevation
Aerial Photography
Topographic Map
Coastline




River Network
Water Catchments



Lead Agency	Stats NZ	LINZ	LINZ	FENZ	LINZ	NZTA	KiwiRail	NIWA	NIWA	LINZ	LINZ	LINZ	LINZ
As at 31 March 2021, does the lead agency provide the key dataset ...	Population	Building	Address	Suburb	Property	Road	Rail	River	Water Catchment	Aerial	Elevation	Coastline	Topo
as a complete national coverage	Yes	Partly	Partly	Yes	Yes	Partly	Yes	Partly	Partly	YES	Partly	Yes	Yes
with relevant attribution	Yes	Partly	Partly	Partly	Partly	Partly	Yes	No	YES	Yes	Yes	YES	n/a
at an adequate level of accuracy	Partly	Yes	Partly	Yes	Partly	Partly	Yes	Partly	Partly	Partly	Yes	YES	Yes
with an acceptable update programme	Partly	Partly	Partly	Partly	Yes	Partly	YES	Partly	Partly	Partly	No	Partly	Partly
with suitable vector topology	Yes	Yes	Yes	Partly	Partly	No	Yes	Yes	Yes	n/a	Yes	Yes	n/a
free of charge	Yes	Yes	Yes	Yes	Yes	Yes	Yes	Yes	Yes	Yes	Yes	Yes	Yes
with a Creative Commons License CC BY	Yes	Yes	Yes	YES	Yes	No	Yes	Yes	Yes	YES	Yes	Yes	Yes
for download in multiple formats	Yes	Yes	Yes	YES	Yes	Yes	Yes	Yes	Yes	Yes	Yes	Yes	Yes
as an OGC and Esri webservice	Yes	Yes	Yes	YES	Yes	No	Yes	Yes	Yes	Yes	Partly	Yes	Partly
with appropriate metadata	Yes	Yes	Yes	Yes	Yes	Partly	YES	Partly	Partly	Yes	Yes	Yes	Yes
discoverable on data.govt.nz	Partly	Yes	Yes	YES	Yes	Partly	Yes	Yes	Yes	Yes	Partly	Yes	Yes
ready to respond to an event	Partly	No	No	PARTLY	No	Partly	PARTLY	Partly	YES	Partly	Partly	PARTLY	No
recognised as the national single source of truth	Partly	Partly	Partly	PARTLY	Yes	No	Partly	Partly	Partly	Partly	Partly	PARTLY	Yes
Total as at 31 March 2021	81%	77%	73%	81%	81%	42%	92%	69%	81%	83%	73%	88%	82%



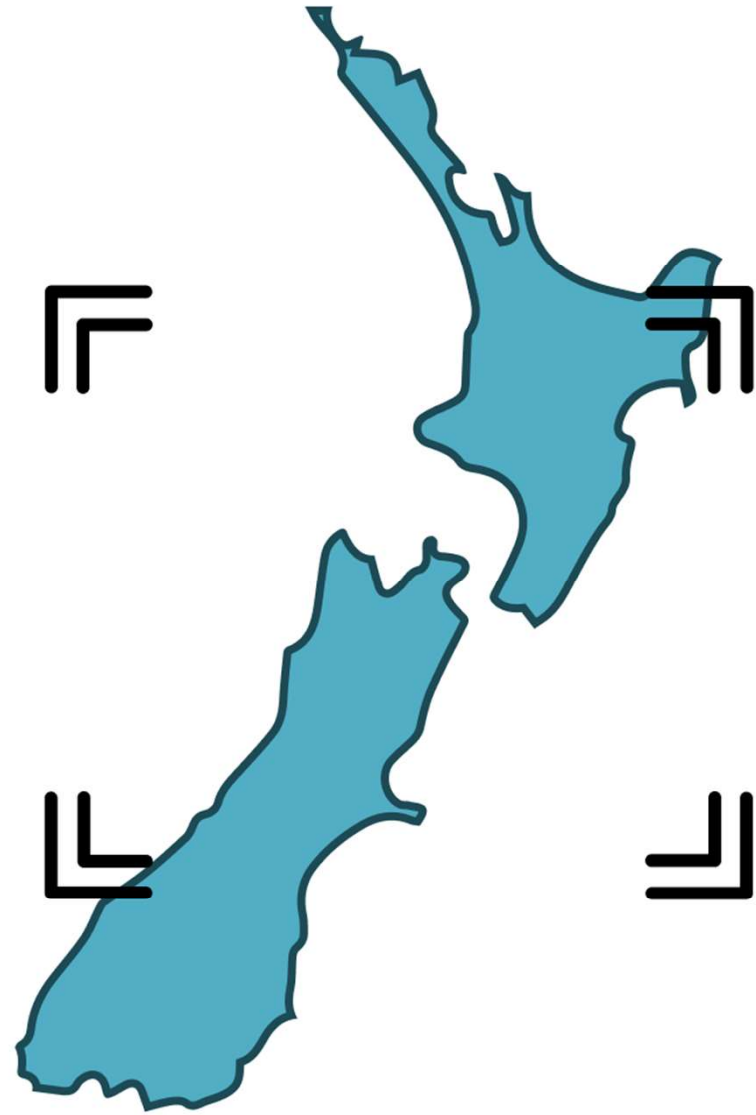
Improved access & use

 Credit: Name



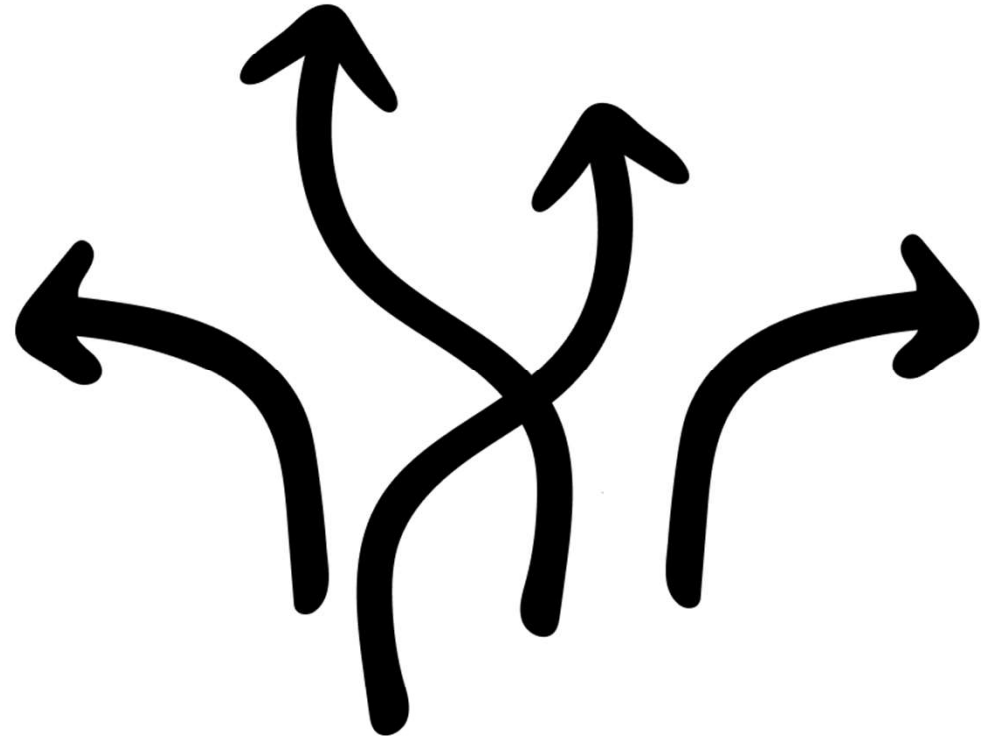
Building a picture

- Where is the danger?
- Who is affected?
- Which services are available?
- How can we best provide aid?
- How might the picture change?



Current setbacks

- Hard to find, analyse and act on
- Lose valuable time
- Duplicate effort
- Inconsistent practices



Our vision



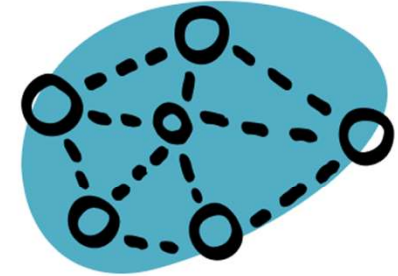
**Timely access
to data**



**A single source
of truth**



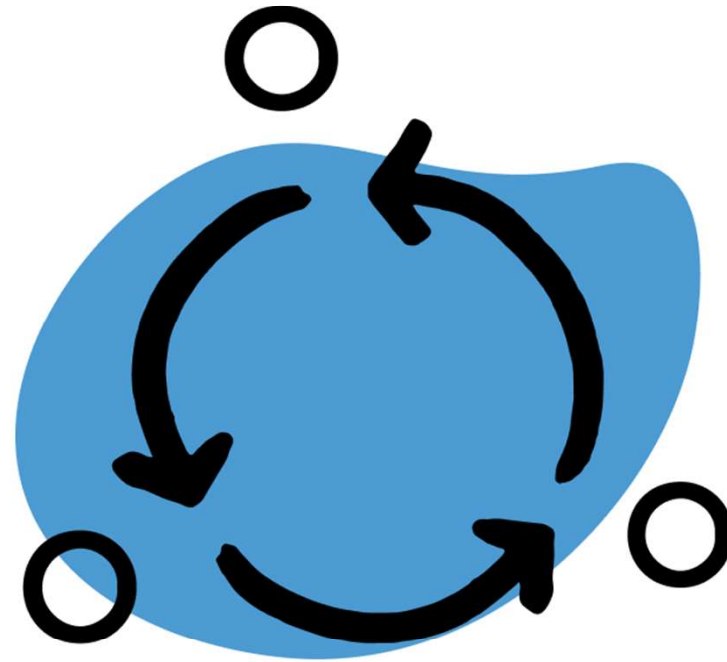
**Find contextual
information early**

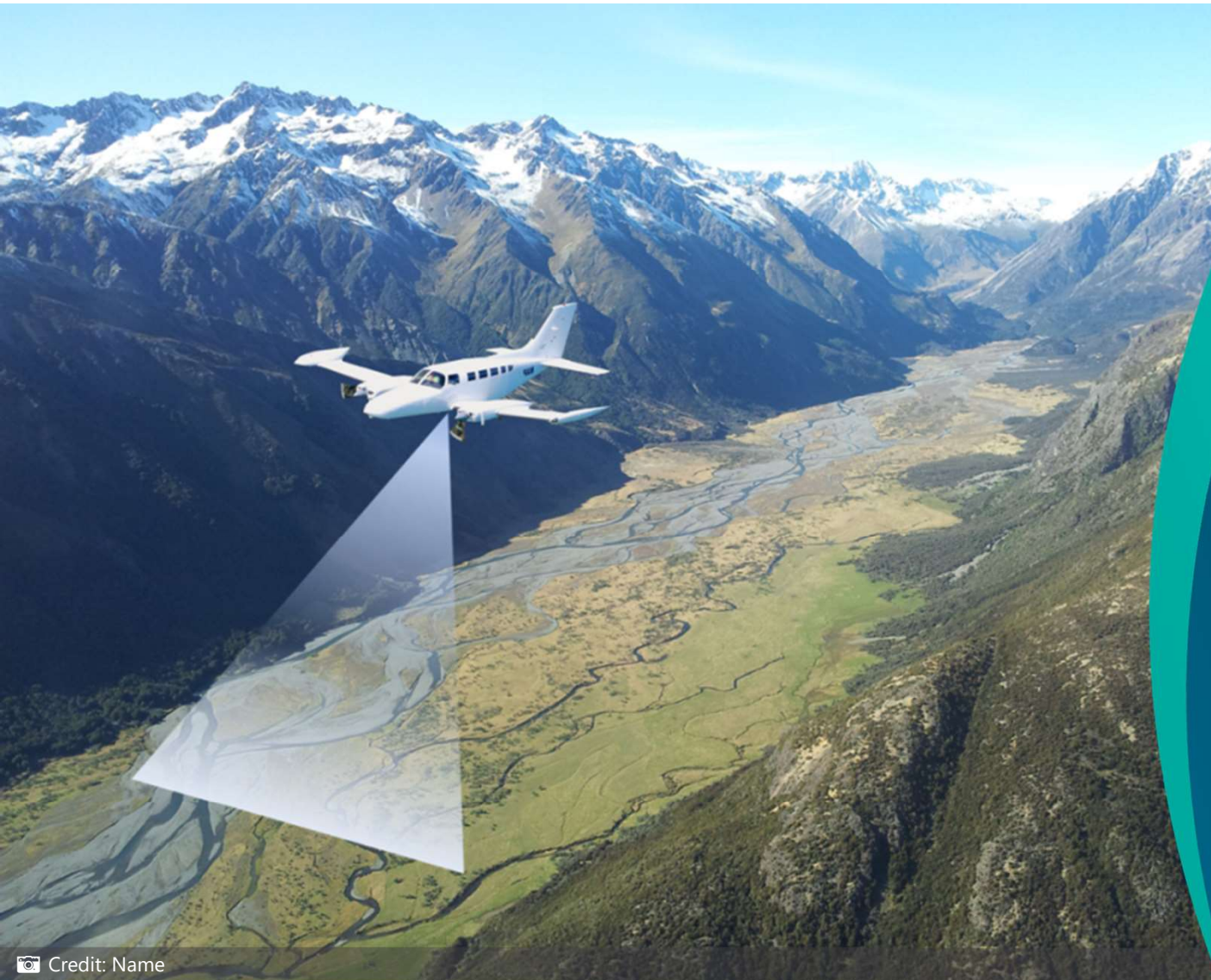


**Share
information**

Key stakeholders

- Police
- FENZ
- Stats NZ
- Defence Force
- Ngāi Tahu
- Environment Canterbury





Response support

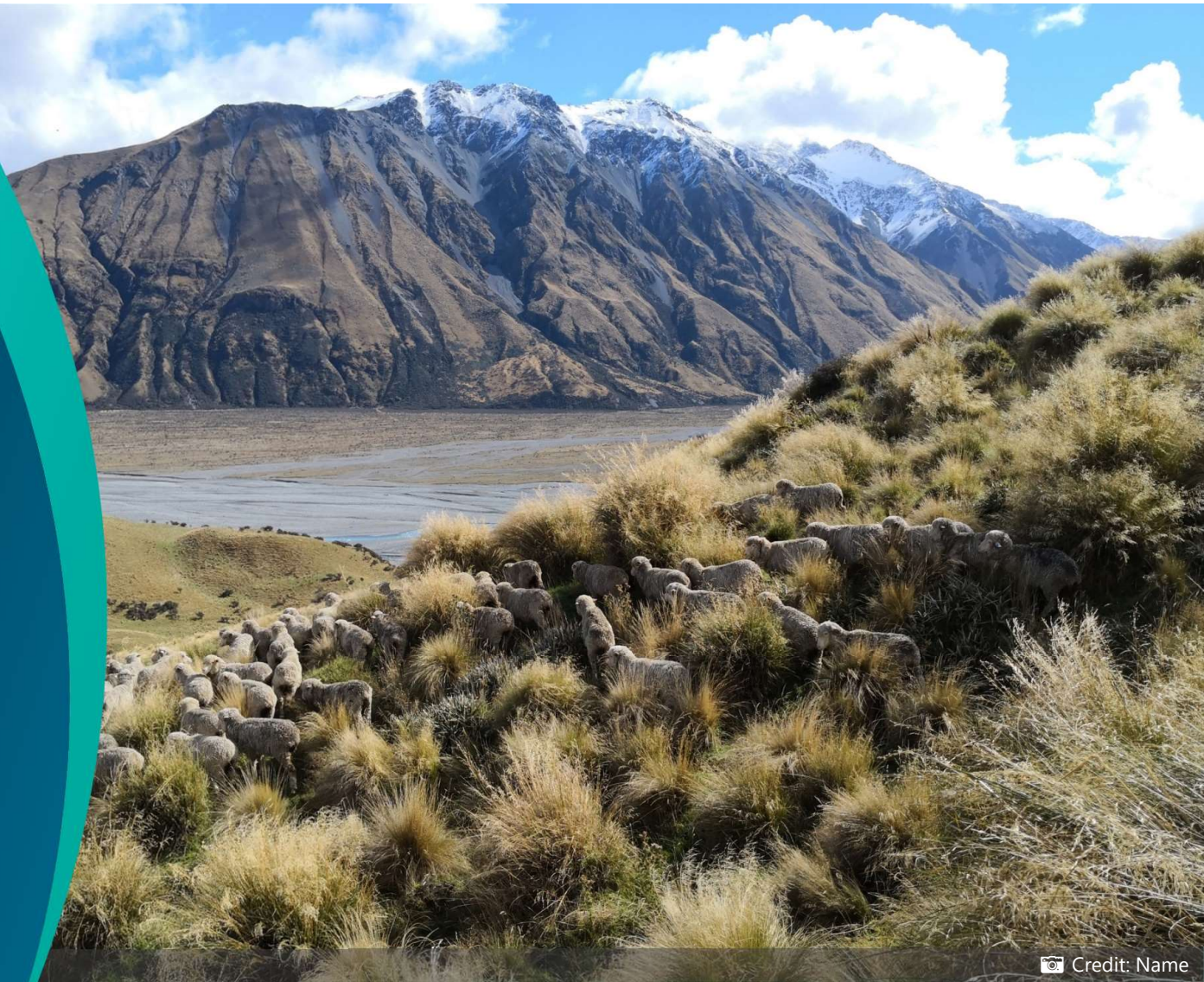
Credit: Name


Emergency response support

The screenshot shows a web browser window with the URL [linz.govt.nz/about-us/our-organisation/emergency-management-support](https://www.linz.govt.nz/about-us/our-organisation/emergency-management-support). The page features the LINZ logo and navigation menu. The main content area is titled "Emergency management support" and includes a sub-header "Emergency management support". Below this, there is a paragraph: "Toitū Te Whenua can help central and local government agencies before, during and after an emergency event." A section titled "We can help with" lists "Emergency response" with sub-links: "Maps", "Data", "Aerial imagery and height data", "Tides, charts and navigation", and "Bathymetry". A sidebar on the right titled "You might be interested in" lists: "LINZ Data Service", "Regulatory search", "Careers at LINZ", and "News". Below that, "Connect with..." lists "Customer Support" with contact details: customersupport@linz.govt.nz and Phone 0800 665 463.



What next?



 Credit: Name

Our Resilience & Climate Change work programme

- Key Data Improvements – ongoing work programme agreed with key users and providers
- Enabling improved data access & use – proof-of-concept for providing “Common Operational Datasets”
- Emergency event support – ongoing process improvement, service development, training & exercises

Thank you!

We'd love to hear from you:

rdeakin@linz.govt.nz
resilience@linz.govt.nz