

eea | Electricity Engineers' Association

HEALTH & SAFETY

2021 Live Work Forum

LOW VOLTAGE WORKS MANAGEMENT

EEA.CO.NZ




1

Low Voltage Works Management

Pre 2019

- Well recognised systems to control work on HV
- LV has not been subject to same requirements
- Limited guidance in SM-EI / Guides
- LV Networks becoming more complex, higher potential for backfeeds
- Increase risk to workers
- Significant number of near misses

eea | Electricity Engineers' Association

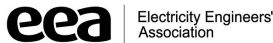


2

Low Voltage Works Management

Post 2020 – LV Works Management Guide

- Guide developed over 12 month period
- Surveyed industry to determine your needs and where industry is
 - New works management system (or)
 - Leverage off existing well understood processes
- Working group made up of Distribution experts
- HV relatively simple, LV more complex for earthing
 - How to resolve this issue
- Several rounds of industry consultation
- Guide published May 2020, updated 2021 (test permits)

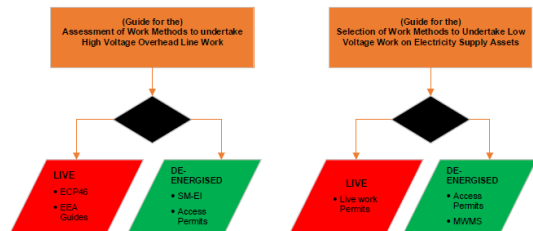


3

Low Voltage Works Management

Fundamentals

- Alignment of process between HV and LV
- LV Networks are labelled and connectivity understood
- Justification of work method selected
- Control of LV networks by either Network controller or Field operator

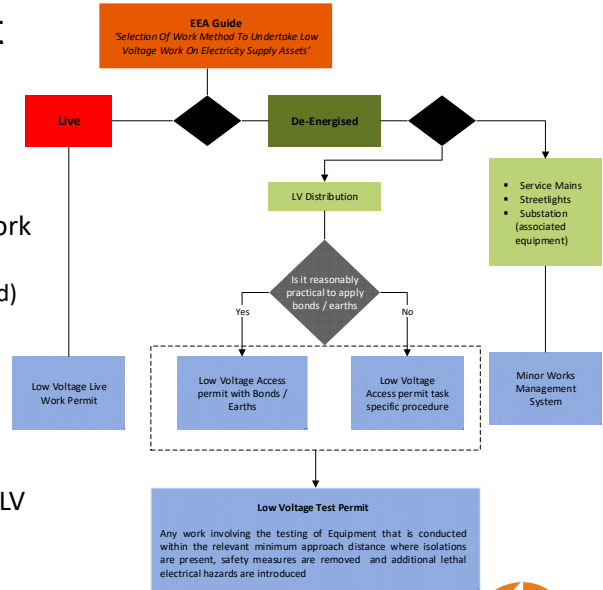


4

Low Voltage Works Management

Fundamentals

- Selection of work method undertaken
- Low Voltage live work controlled through a Live Work Permit
 - Low Voltage Live Work procedures (being developed)
- De-energised work controlled through an Access Permit
- Test permits required where additional electrical hazards are introduced through testing of isolated LV
- Work on Service mains controlled by a MWMS



Low Voltage Works Management

Fundamentals

- SM-EI review included rule changes to support the guide
- SM-EI Structure changed
- Language / words have changed , but intent hasn't
- Rule statements standalone,
- Circular references removed
- Rule changes relate to LV Works Management



Low Voltage Works Management

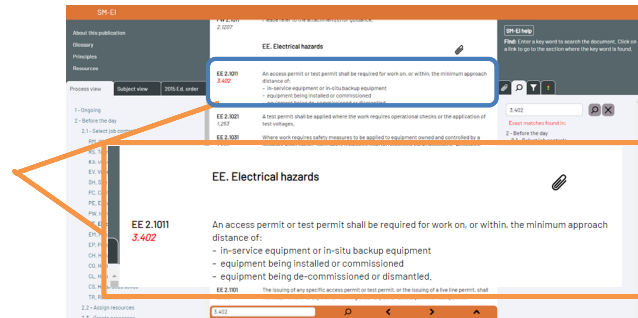
SM-EI Rule change example

- SM-EI review included rule changes to support the guide

SECTION 4: RULES COMMON TO ALL ACCESS AND TEST PERMITS

BACKGROUND

- a. An access or test permit is required before work commences on any equipment, or within the relevant minimum approach distance of electrical equipment that needs to be isolated, as provided in rule 3.402. (Relevant minimum approach distance is the distance that would apply if the equipment was live).
- b. For electrical equipment, access and test permits apply to HV equipment only, except as provided in rule 3.402 b.



Low Voltage Works Management

SM-EI Rule change example

Changes to SM-EI and announced upcoming features.

[Part 1: What's changed](#)

[Part 2: Examples](#)



Questions?

EEA.CO.NZ

