

Don't Be Reluctant; Build Redundant

Luke Reisima

17th August 2018



What is Redundancy?

Why is it important?



One Manapouri Unit



Versus

The entire Ohau A station



Manapouri incident 2016

350MW lost in one minute



meridian

- Ramp down at 1 MW/sec across six units
- South Island Frequency dropped to 49.46Hz
- Clutha increased generation by 40MW
- Waitaki chain increased generation by 90MW
- HVDC dropped to 120MW North from 790MW



What was the plan?



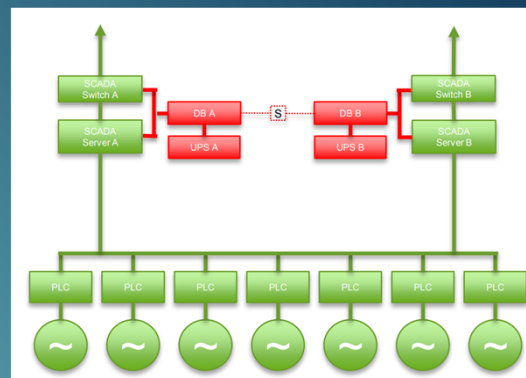
meridian

Original Plan:

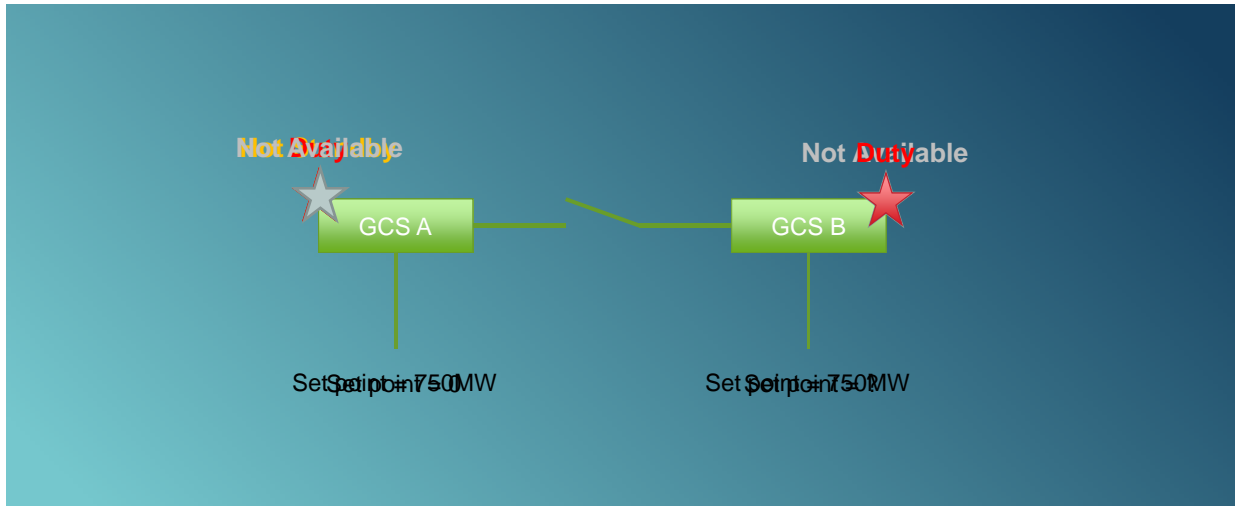
It's a 24V system, just work on it live

Contractors Plan:

Work on each side de-energised
(Avoid the large fault current from shorting the battery)



What went wrong?



Another Example?

Type redundancy at Aviemore



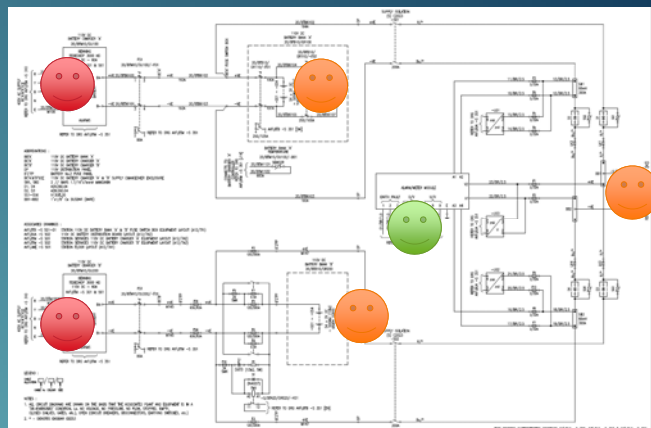
Station voltage levels:

24V DC =

110V DC =

400V AC =

Also 11kV – 220kV





80 MVAR into a 60MVA machine?

Aviemoire type redundancy



meridian

What was the plan?

- 400V outage, intending for the 110V DC to take over
- No type redundancy in the batteries, and both banks failed



400V circuit breakers (1988)



80 MVAR into a 60MVA machine?

Aviemoire type redundancy



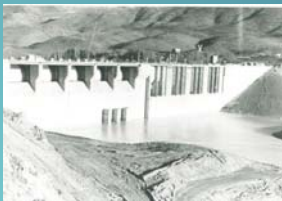
meridian

What happens during a unit trip?

- Head gates close
- Excitation stops
- HV Circuit breakers open

What actually happened?

- ✓
- ✓
- ✗



How you *can* fit 80MVAR into a 60MVA machine

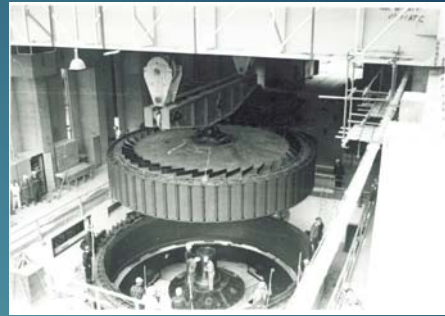
Dense on the electrical theory but bear with me...



meridian



Aviemore stator being lowered into place



Aviemore Rotor being lowered into place

How about a mechanical example?

(I'm electrical so this'll be a struggle)



meridian

Remember that massive balls up at Aviemore?

Also caused our auxiliary machine to run at 200% overspeed for 1.5 hours



Should look like:



So after all that how do we incorporate redundancy?

What types of redundancy can we shoot for:



meridian

Hard options:

- Don't jump into new technology
- Consideration of ways the plant can be used (or abused)
- Type redundancy
- Supply redundancy
- Even just doubling up*



Madapouli Power Project
West Arm Powerhouse Contract
Excavation in progress in machine hall. View looking West towards emergency exit, with transformer vault excavations on right and ramp from access tunnel to Elev. 5.0 in left background. July 1967

So after all that how do we incorporate redundancy?

What types of redundancy can we shoot for:



meridian

Easy options:

- Normally open switches
- Location redundancy
- Keeping mechanical systems



So why can't smart just mean smart?



meridian



Just do it; build redundant



meridian

Questions?